
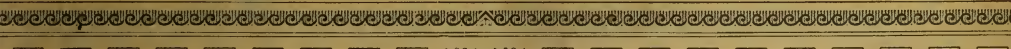
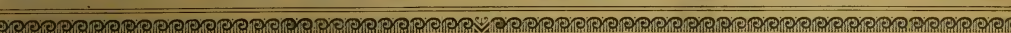




CALENDAR



OF



Stanstead Wesleyan College

STANSTEAD, P. Q.  
1888-89.



F507  
1888  
S 711

*Purchased  
from the  
Chancellor  
Richardson  
Memorial  
Fund*

CANADIANA  
COLLECTION  
QUEEN'S  
UNIVERSITY  
AT KINGSTON



ONTARIO CANADA

*The* EDITH *and* LORNE PIERCE  
COLLECTION *of* CANADIANA



*Queen's University at Kingston*

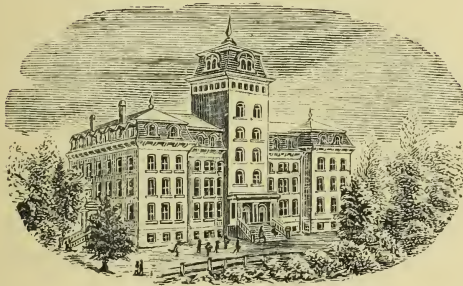
# CALENDAR

—OF—

## STANSTEAD WESLEYAN COLLEGE

STANSTEAD, P. Q.

1888-89.



INCORPORATED BY ACT OF PARLIAMENT, 1872.

Montreal:

THE GEORGE BISHOP

ENGRAVING AND PRINTING COMPANY, LIMITED.

1888.

F5612

1888

S791

# CALENDAR FOR 1888-1889.

THE COLLEGE YEAR CONSISTS OF FOUR TERMS OF TEN WEEKS EACH.

College opens.....	September 3rd,,	1888
Second Term begins.....	November 12th,	1888
College closes for Christmas Holidays.....	December 21st,	1888
Classes resumed.....	January 2nd,	1889
Third Term begins.....	January 30th,	1889
Fourth Term begins.....	April 10th,	1889
Annual Sermon to Students.....	June 16th,	1889
Commencement Exercises.....	June 19th,	1889

For Calendar and further information, address

THE PRINCIPAL

STANSTEAD WESLEYAN COLLEGE,

STANSTEAD, QUE.

1722718



# STANSTEAD WESLEYAN COLLEGE.

---

## BOARD OF TRUSTEES.

- REV. J. W. SPARLING, M.A., B.D., *President of the Conference.*  
REV. T. G. WILLIAMS.  
REV. WM. SCOTT.  
REV. J. T. PITCHER.  
REV. W. H. GRAHAM.  
REV. A. LEE HOLMES, M.A.  
REV. WM. HANSFORD.  
REV. W. I. SHAW, LL.D.  
REV. J. B. SAUNDERS, M.D.  
REV. J. W. CLIPSHAM.  
REV. W. C. HENDERSON, M.A., D.D., *Principal.*  
REV. A. McCAN  
REV. H. CAIRNS.  
REV. RICHARD ROBINSON.  
C. W. PIERCE, Esq., STANSTEAD.  
S. FOSTER, Esq., ROCK ISLAND.  
GEO. BISHOP, Esq., MONTREAL.  
C. C. COLBY, Esq., M.P., STANSTEAD.  
D. A. MANSUR, Esq., STANSTEAD.  
A. P. BALL, Esq., STANSTEAD.  
A. B. NELSON, Esq., DERBY LINE.  
A. G. BUGBEE, Esq., M.D., DERBY LINE.  
S. FINLEY, Esq., MONTREAL.  
E. CHOWN, Esq., KINGSTON.  
HON. G. G. STEVENS, WATERLOO.  
H. D. HOLMES, Esq., DERBY LINE.  
S. STEVENS, Esq., STANSTEAD.  
W. H. LAMBLY, Esq., INVERNESS.  
J. D. PARKER, Esq., DUNHAM.  
REV. CHAS. A. HANSON, *Secretary-Treasurer.*

**EXECUTIVE COMMITTEE.**

REV. C. A. HANSON.	REV SAMUEL JACKSON.
S. FOSTER, Esq.	C. W. PIERCE, Esq.
A. P. BALL. Esq.	C. C. COLBY, Esq., M.P.
DR. A. G. BUGBEE.	A. B. NELSON, Esq.
D. A. MANSUR, Esq.	H. D. HOLMES, Esq.
G. G. BRYANT, Esq.	SIDNEY STEVENS, Esq.
REV. DR. HENDERSON.	D. W. DAVIS, Esq., M.A.
REV. A. McCANN.	

---

**VISITORS.**

REV. JAMES HENDERSON.  
REV. JAMES KINES.  
G. L. MASTEN, Esq., M.A., COATICOOK.  
G. H. HOWARD, Esq., SHERBROOKE.

---

**SECRETARY-TREASURER.**

REV C. A. HANSON, 178 St. JAMES STREET, MONTREAL.

# STANSTEAD WESLEYAN COLLEGE

SESSION 1887-88.

---

## GOVERNOR AND PRINCIPAL:

REV. D. KENNEDY, S.T.D.,

SUCCEDED BY

REV. W. C. HENDERSON, M.A., D.D.

---

## FACULTY:

THE PRINCIPAL,

PHILOSOPHY AND LOGIC.

A. KING, M.A.,

NATURAL SCIENCE AND COMMERCIAL BRANCHES.

MISS C. R. WALKER, B.A.,

HIGHER MATHEMATICS.

MISS E. E. ADAMS, M.L.A.

LATIN AND LITERATURE.

MISS L. A. VESSOT,

FRENCH.

PROF. J. S. HALL,

VOCAL AND INSTRUMENTAL MUSIC.

MISS J. E. LAWRENCE, M.E.L.,

ASSISTANT IN MUSIC AND ENGLISH BRANCHES.

MISS ISABEL BUCKLAND, M.E.L.,

PREPARATORY MODEL DEPARTMENT.

MISS L. A. VESSOT,

DRAWING AND PAINTING.

## GRADUATES.

## CLASS 1874.

Clara J. Stevens ..... M. E. L.

## CLASS 1875.

Jennie E. Frost ..... M. E. L.

Rosa Greene ..... M. E. L.

## CLASS 1879.

Jessie Maud Colby ..... M. L. A.

Lillie M. Ferrin ..... M. E. L.

Mrs. A. J. Lawrence ..... Music.

Minnie Adams ..... Music.

Malvina Ross ..... Music.

Jessie Maud Colby ..... Music.

## CLASS 1880.

Minnie Bachelder ..... Music.

Nettie Kilburn ..... Music.

Seraphine St. Pierre ..... Music.

## CLASS 1881.

Mary Hall ..... M. E. L.

Nettie Kilburn ..... M. E. L.

Annie Daniels ..... Music.

## CLASS 1882.

Mary F. Colby ..... M. L. A.

Georgie Bryant ..... M. E. L.

Nellie M. Hall ..... M. E. L.

## CLASS 1883.

Edith Miller ..... M. E. L.

## CLASS 1884.

Emma Boynton ..... M. E. L.

Florence J. Butchard ..... M. E. L.

Helen Rankin ..... M. E. L.

## CLASS 1885.

Mattie S. Colby ..... M. L. A.

Jennie Lawton ..... M. L. A.

Dora Corrigan ..... M. E. L.

Ida Gale ..... M. E. L.

Lenora J. Reid ..... M. E. L.

## CLASS 1886.

Eva Gale .....	M. E. L.
Georgie Wilson .....	M. E. L.

## CLASS 1887.

Isabelle S. Buckland .....	M. E. L.
Mary A. Channell .....	M. E. L.
Jennie E. Lawrence .....	M. E. L.
Jennie E. Lawrence .....	Music.
Emma F. Reed .....	Music.

## CLASS 1888.

Tillie A. Arnold .....	M. L. A.
Ida L. Chambers .....	M. L. A.
Mary W. Mansur .....	M. L. A.
E. E. Adams [ad eundum] .....	M. L. A.
Alice Robinson .....	M. L. A.
Jessie F. Hopkirk .....	M. E. L.
Annie H. Kelsey .....	M. E. L.
Idalia Reid .....	M. E. L.
Ida L. Chambers .....	Music, Instrumental.
Jessie F. Hopkirk .....	Music, Instrumental and Vocal.
Annie H. Kelsey .....	Music, Instrumental and Vocal.
Mary W. Mansur .....	Music, Instrumental.
Emma Moulton .....	Music, Instrumental.

## STANSTEAD WESLEYAN COLLEGE.

---

UNDER THE DIRECTION OF THE MONTREAL CONFERENCE OF THE METHODIST CHURCH.

---

### DESIGN.

The aim of the Founders of this Institution was to provide the means of higher education under Christian influence. Accordingly, the range of departments in which instruction is given has been made extensive, adapting the College to the wants of the country. While the Methodist Church has assumed the responsibility of its maintenance and moral government, the leading Protestant Churches are represented upon its Board of Trustees, Executive Committee and Faculty of Instruction. Parents may rest assured that their denominational preferences regarding their children will be scrupulously respected.

### ADMISSION.

The Classes of the Institution are open to both Ladies and Gentlemen, *but only Ladies are received as boarders in the College Building*. Suitable homes for boys and young men are provided in Christian families, convenient to the College.

### LOCATION.

The College is located in the Village of Stanstead Plain, in the County of Stanstead, P.Q.

Situated upon an elevated plateau, Stanstead is noted for the salubrity of its atmosphere, the purity of its water, and freedom from all forms of malarious disease. Unquestionably, in a sanitary point of view, no better location for an Educational Institution could have been selected.

Stanstead is celebrated for beauty and variety of scenery, and the College occupies one of its finest sites. In the foreground the country slopes away to the far famed Lake Memphremagog; the picturesque Green Mountains and an amphitheatre of lofty hills skirt the horizon, and the intermediate country is beautifully undulating and diversified. These rare natural advantages are well supplemented by art and culture. Residences and churches indicate a degree of wealth and taste not often found outside of large cities.

The quietness of the village and surrounding country invites to studiousness, while the absence of many temptations peculiar to large towns and cities renders the place eminently safe for the residence of students removed from the watchful guardianship of home.

#### DESCRIPTION OF BUILDING.

The building rests upon a granite foundation, is five stories in height, has a lofty central tower, and presents a fine architectural appearance. Its dimensions are 142 x 52 feet, with a wing 37 x 42 feet, and it is sufficiently capacious to accommodate a large number of students.

The health of students is considered of the first importance, and the arrangements of the College are made with this end in view. The halls, parlors, bedrooms, schoolrooms, dining hall and corridors, are spacious and well lighted. The new and improved system of heating has proved entirely satisfactory.

Each bedroom contains a closet, and is furnished with bedstead, bedding (except sheets and pillow-slips), wash-stand, bureau, mirror, chairs and table.

Every effort will be made by the Trustees and Faculty to make the College comfortable and attractive as a home for students.

#### ACCESSIBILITY.

Stanstead is reached by a branch of the Passumpsic River R. R. which makes three principal connections:—

- 1st. At Sherbrooke, P.Q., with the Grand Trunk, for Richmond, Montreal, Quebec, and all points North.
- 2nd. At Newport, Vt., with the South Eastern R. R., for Cowansville, Richford, Vt., St. Albans, Vt., St. Johns, Montreal, and all points West.
- 3rd. At White River Junction, with direct lines to Springfield, Boston, New York, and all points South.

## GRADUATES IN COMMERCIAL.

1876.

Charles C. Brown  
 Charles Browne  
 Eugene C. Cowles

1877.

John Armstrong  
 J. Luke Clarke  
 William J. Gordon  
 F. N. Johnson  
 Wright B. LeBaron  
 Albert Macdonald  
 Fred. Martin.  
 Allen A. McRossie  
 Fred. W. Peasley

1878.

Almus J. Brown  
 M. H. Ewings  
 Charles E. Nelson  
 Edwin B. Pope

1879.

J. T. Briden  
 J. B. Campbell  
 Albert E. Cooper  
 Theodore Ford  
 C. H. Martin  
 W. H. Norton  
 C. S. White

1880.

G. T. Bishop  
 G. H. House  
 H. C. Jenkins  
 F. S. Laythe  
 H. W. Lyster  
 C. J. Pierce

1881.

E. E. Bartlett  
 Fred. T. Caswell  
 W. F. Chapman  
 Miss Katie Davis  
 W. H. Faneuf.

1882.

Benjamin Dunn  
 Herbert A. Eneas  
 Amos E. Fregeau  
 T. W. Gordon  
 Wilbur Greenlay  
 R. L. G. Jones  
 F. R. Lanigan  
 A. C. Walker  
 Geo. Wilkinson

1883.

James Brevoort  
 L. S. Emerson  
 Fred. L. Frost  
 Jerry Gilmore  
 E. E. Jenkins  
 John I. Parker  
 C. M. Scott  
 Lachlan Van Vleit  
 George Fuller  
 T. Lee Quimby  
 Simon Rankin

1884.

George N. Bachelder  
 George A. Berwick  
 John N. Caswell  
 Charles Converse  
 Arthur E. Curtis  
 Charles J. Draper  
 G. F. Goodwin  
 H. P. Harris

1884 [CONTINUED].

William Loomis  
L. P. McDuffee  
McNeil Miltimore  
Charles H. Plumley  
James Steele

1885.

Arthur A. Hitchcock  
Wilfred J. Scott  
Edward Wetherell  
Charles J. Bull  
Charles J. McGill  
J. Mitchell  
W. A. Bond  
Charles W. Kimpton  
George Robinson

1886.

Lennie S. Channell  
Albert F. Jackson  
C. J. Mazurette  
S. W. Mooney  
B. B. Morrill  
Henry O'Rourke

1887.

N. A. Alexander  
A. E. Clements  
Miss Mary A. Channel  
C. Z. Gilmore

1888.

Miss Mamie Reed  
Miss J. E. Brock  
Leslie Bartlett  
W. P. Baxter  
C. F. Bigelow  
A. E. Blount  
C. Boynton  
C. R. Davis  
E. Hovey  
E. Jenkins  
C. H. Mansur  
C. Shufelt

## STUDENTS

FOR THE SESSION 1887-'88.

## LADIES.

Adams, Lillie	....	....	....	....	....	Montreal, Que.
Arnold, Tillie A.	....	....	....	....	....	Dundee, "
Brock, Jennie L.	....	....	....	....	....	Stanstead, "
Bryant, Avyette	....	....	....	....	....	The Narrows, Que.
Buckland, Claribel	....	....	....	....	....	Barnston, Que.
Caswell, Gertrude	....	....	....	....	....	Derby Line, Vt.
Chambers, Ida L.	....	....	....	....	....	Stanstead, Que.
Chambers, Neta	....	....	....	....	....	" "
Chambers, Pearl	....	....	....	....	....	" "
Clarke, Josephine	....	....	....	....	....	" "
Clarke, Jessie	....	....	....	....	....	" "
Cleveland, Florence	....	....	....	....	....	Richmond, "
Cleveland, Julia	....	....	....	....	....	" "
Cram, Cora	....	....	....	....	....	Rock Island, Que.
Flint, Kitty	....	....	....	....	....	Derby Line, Vt.
Flint, Nelly	....	....	....	....	....	" "
Fuller, Myrtie	....	....	....	....	....	Rock Island, Que.
Garceau, Miss	....	....	....	....	....	" "
Gale, Ethel	....	....	....	....	....	Quebec, Que.
Gordon, Ethel	....	....	....	....	....	Potton, Que.
Hastings, C.	....	....	....	....	....	Way's Mills, Que.
Hansford, Bertie L.	....	....	....	....	....	Montreal, Que.
Heath, Maud	....	....	....	....	....	South Barnston, Que.
Henderson, May	....	....	....	....	....	Stanstead, Que.
Henderson, Ethel	....	....	....	....	....	" "
Herbert, Josephine	....	....	....	....	....	" "
Hill, Mamie	....	....	....	....	....	Fairfax, "
Hill, Annie	....	....	....	....	....	Cassville, "
Hopkirk, Jessie	....	....	....	....	....	Sherbrooke, Que.
Jenkins, Mary	....	....	....	....	....	Smith's Mills, Que.
Jones, Mabel	....	....	....	....	....	Quebec, Que.
Johnson, Miss	....	....	....	....	....	Derby Line, Vt.
Kelsey, Annie H.	....	....	....	....	....	Bridgeport, Conn.
Knight, Irene	....	....	....	....	....	Fitch Bay,
Knight, Nora	....	....	....	....	....	Smith's Mills, Que.



Bigelow, C. F.	.....	Georgeville, Que.
Blount, A. E.	.....	Stanstead, Que.
Boynton, C. G.	.....	Georgeville, Que.
Boynton, W.	.....	Boynton, Que.
Brock, W.	.....	Stanstead, Que.
Burns, F.	.....	Boston, Mass.
Caswell, O.	.....	Stanstead, Que.
Chapman, T.	.....	Rock Island, Que.
Channell, G. B.	.....	Stanstead, Que.
Channell, Frank	.....	" "
Colby, J. C.	.....	" "
Clendenning, Geo.	.....	Montreal, Que.
Cram, C.	.....	Rock Island, Que.
Davis, H.	.....	
Davis, C. R.	.....	Holland, Vt.
Farrant, N.	.....	Newport, Vt.
Hannah, J.	.....	Stanstead, Que.
Hastings, M.	.....	South Barnston, Que.
Heath, E.	.....	" "
Henderson, A.	.....	Stanstead, Que.
Hovey, E.	.....	West Hatley, Que.
Hovey, W.	.....	Rock Island, "
Hunt, C.	.....	Fitch Bay, "
Hurd, W.	.....	West Hatley, "
Ives, C.	.....	Stanstead, Que.
Jenkins, E.	.....	" "
Kezar, Geo.	.....	South Barnston, Que.
Knight, W.	.....	Smith's Mills, Que.
Lawton, F.	.....	Stanstead, Que.
Libby, F.	.....	South Barnston, Que.
Lynn, W. A.	.....	Rock Island, Que.
Maheux, A.	.....	Stanstead, Que.
Mansur, C. H.	.....	" "
Maughn, J. T.	.....	Chicago, Ill.
Mazurette, H.	.....	Stanstead, Que.
Morrill, V.	.....	" "
Murdock, T.	.....	" "
McDougall, T.	.....	" "
McLaughlin, F.	.....	Knowlton, "
McShane, Geo.	.....	Stanstead, "
Nurse, H.	.....	Rock Island, Que.
Nurse, C.	.....	" "
O'Rourke, F.	.....	" "
O'Rourke, S.	.....	" "
Reid, W.	.....	Quebec, Que.

---

Sanbourne, E.	....	....	....	....	....	Fairfax, Que.
Shufelt, C.	....	....	....	....	....	South, Barnston, Que.
Stewart, H. B.	....	....	....	....	....	Beebe Plain, Que.
Stone, W. N.	....	....	....	....	....	Derby Line, Vt.
Taylor, C. H.	....	....	....	....	....	Stanstead, Que.
Tribert, C.	....	....	....	....	....	Rock Island, Que.
Williamson, J.	....	....	....	....	....	Stanstead, Que.



## COURSES OF STUDY.

THE INSTITUTION PROVIDES SIX COURSES OF STUDY.

1. The Academic Department.
2. The Commercial Course.
3. The University Preparatory Course.
4. The Collegiate Course for Young Ladies.
5. The Course in Instrumental Music (piano and organ) and Vocal Culture.
6. The Course in Drawing and Painting.

### THE ACADEMIC DEPARTMENT.

The course of study embraces Arithmetic, English Grammar, History, Reading, Spelling, Penmanship, Free-Hand Drawing, Geography, Composition, Hygiene, also Algebra, Latin and French, as required for Grade II Model Schools.

It is divided into three grades, and affords thorough instruction in all the common English branches.

### THE COLLEGIATE COURSE.

#### FIRST YEAR.

English Analysis .....	<i>Goldsmith's Deserted Village</i>
English History, to Tudor Period.....	<i>Collier</i>
Canadian History, French Rule .....	<i>Miles</i>
Rhetoric.....	<i>Hart</i>
Physics .....	<i>Stewart</i>
Arithmetic .....	<i>Hamblin Smith</i>
Algebra—Simple Equations .....	“ “
Euclid—Book I.....	“ “
French Grammar.....	<i>Fasquelle's Introductory</i>
French Conversation.....	
Lectures Choiesies .....	<i>Duval</i>
Latin Grammar and Reader .....	<i>Harkness</i>
Cæsar—Book I, 1-25.....	
Greek Grammar and Reader .....	<i>Hadley</i>
Free-Hand Drawing .....	<i>Canadian Drawing Course</i>
Book-Keeping .....	<i>Gage's</i>

## SECOND YEAR.

English Classics.....	<i>Lady of the Lake</i>
Roman History.....	<i>Green</i>
English History—Tudor, Stewart and Brunswick Periods.....	
Canadian History—English Rule.....	
Old Testament History.....	<i>Maclear</i>
English Literature.....	<i>Trimble</i>
Physiology and Hygiene.....	<i>Foster and Barnes' Series</i>
Chemistry.....	<i>Steele</i>
Algebra (completed).....	<i>Hamblin Smith</i>
Euclid—Books II and III.....	“ “
French.....	<i>Fasquelle's Larger Course</i>
Lectures Françaises.....	<i>Darey</i>
French Conversation and Dictation.....	
Latin, Cæsar, Book I; and Virgil, Book II, 1-300.....	
Greek, Grammar and Anabasis.....	

## THIRD YEAR.

English Classics.....	<i>Different Authors</i>
Grecian History.....	<i>Greene</i>
New Testament History.....	<i>Maclear</i>
English Literature.....	<i>Brooks</i>
Botany.....	<i>Gray</i>
Euclid, Books IV and VI, and Definitions Book V.....	
Astronomy.....	<i>Steele</i>
Logic.....	<i>Jevons</i>
Mental Philosophy.....	<i>Haven</i>
Moral “.....	<i>Hickok</i>
Trigonometry (optional).....	<i>Galbraith and Haughton</i>
French.....	<i>Fasquelle's Larger Course</i>
Racine and French Literature.....	
French Conversation and Dictation.....	
Latin, Virgil, Books II and Cicero's Orat. I and II.....	
Greek, Homer.....	

In this Course the following options are offered.—

## THE LADIES' COLLEGIATE COURSE FOR M.L.A.

*Imperative*—English, Mathematics, Latin, Philosophy, History.

*Optional*—Any one of the following :—Science, Greek, French.

### THE LADIES' COLLEGIATE COURSE FOR M.E.L.

*Imperative*—English, Mathematics, Philosophy, History.

*Optional*—Any one of the following :—Science, Latin, Greek, French

Weekly exercises in Composition are required throughout the whole course.

The degree of Mistress of English Literature or Mistress of Liberal Arts is conferred upon ladies who complete the above work satisfactorily.

### THE UNIVERSITY PREPARATORY.

The course of study is designed to secure to the student thorough preparation for Junior Matriculation (Freshman standing) and Senior Matriculation (Sophomore standing) in the Provincial Universities, and affords excellent facilities for the training and instruction of intending teachers.

### THE COMMERCIAL COURSE.

**BOOK-KEEPING.**—Business Forms, Language of Trade and Theory of Accounts, Principles of Debit and Credit, Classification of Accounts, Journalizing, Posting, Trial Balances, Statements of Loss and Gain, Statements of Assets and Liabilities, Closing the Ledger, Making out Balance Sheets, Partnership Sets, Changing Single to Double Entry, Introduction and Use of Auxiliary Books and Posting from these direct to the Ledger, Journal and Day Book combined, Forwarding and Commission Business, Various Forms of Keeping Books.

**BUSINESS ARITHMETIC.**—Practical Measurements, Bills and Invoices, Counting House Practice, Investments, Exchange, Commercial Paper, Insurance, Trade Discounts, Marking Goods, Commission and Brokerage, Interest, Partial Payments, Percentage, Profit and Loss, Proportion, Partnership Settlements, &c.  
Grammar, Geography, Dictation.

**COMMERCIAL LAW.**

**BUSINESS PENMANSHIP.**

**BUSINESS AND GENERAL CORRESPONDENCE.**

This course is open to both ladies and gentlemen and affords a thorough and scientific training in those subjects which most closely pertain to practical business life.

Every student who has successfully completed the above course will receive a Diploma.

## MUSIC—VOCAL AND INSTRUMENTAL.

The Department of Music will include instruction in Chorus Singing, by note or solfeggio, Solo Singing, Piano and Organ Playing, Harmony and Counterpoint.

The Piano and Vocal courses comprise three years. This period may be shortened in case of extraordinary proficiency and diligence on part of pupil.

Pupils who have already attained some degree of advancement may be admitted as students of second or third year, according to judgment or decision of the Faculty.

The courses are divided as follows :—

## FIRST YEAR.

Five finger exercises. Urbach Piano Method ; Scales, Diatonic and Chromatic ; Arpeggios ; Elementary Words and Studies by Czerny, Bertini, Kulan and others. These studies to be alleviated as soon as possible by Parlor Rondos and other light pieces of popular authors.

## SECOND YEAR.

Continuation of established line of Technique by use of varied Arpeggio forms, Trills and Octaves, combined with points of Harmony, tending to an advanced course of Technique Studies of Haller, Clementi, Cramer, Czerny, Handel's 12 Studies, lighter Sonatas and Compositions of Mozart, Beethoven, and Mendelssohn's songs without words. Also modern compositions of recognized merit.

## THIRD YEAR.

Development of Classical and Concert styles, Richter's Harmony, Study of the most noted works of Mendelssohn, Chopin, Beethoven, Mozart, Weber, Handel, Bach, Thalberg, Gottschalk, Volkman and others.

The tuition in every one of these three years course will be so arranged as to combine the gradual development of the fingers (Technique) and that of the musical intelligence of the pupil. The last point will be carefully attended to from the beginning of the course. Those possessing great talent will be specially urged to make the entire study *strictly* classical.

## VOCAL COURSE.

It will be the aim to form a perfect blending of registers, by simple method, enhancing a correct idea of distinct enunciation, application of breathing, and strict adherence to the principles governing dramatic style.

The method used is founded on light singing from the very first, enabling a perfect stroke of glottis under very slight tension, and the continued employment of so-called "Covered Tones."

By this means, voices appearing to have lost their resonance so much sought after by the best teachers, are recovered, sustaining the theory of "once a voice, always a voice."

#### FIRST YEAR.

Development of pure tone by old Italian method of blending registers. Instruction in the hygiene of the vocal organs, the management of lungs, breathing, stroke of glottis, of the diaphragm, &c. Vocalises by Concone, Campana, Bassini. A few simple ballads.

#### SECOND YEAR.

Studies in Phrasing. Execution and Expression. Vocalises by Bonaldi, Panofka, Italian of Vaccai. More difficult Ballads, German Songs by best composers, Italian Arias, etc. First principles of Recitative.

#### THIRD YEAR.

Study of Opera and Oratorio Singing. General finishing studies in style and expression. Vocal pupils are required to possess a moderate proficiency on the piano. Study of harmony is recommended. •

A full supply of Musical Instruments are found in the Department.

Every student who completes either of the courses of study as specified will receive a Diploma conferring upon them the Degree of M.M (Mistress of Music).

#### DEPARTMENT OF PAINTING, DRAWING, &c.

The method of Instruction in this Department is that employed in the best European schools. Copying under the eye of a skilful teacher, is regarded as the first means of acquiring correct ideas of the art ; but, from the beginning, the pupil will be taught that Nature is her ultimate guide, and as early as possible will be accustomed to make studies and sketches from natural forms.

Pupils who become proficient in Drawing and Painting will be entitled to receive a special Testimonial.

---

## GENERAL REMARKS.

### ADMISSION.

Students are admitted at any time, but it is an advantage to enter upon the first day of a term. They are graded at first on their own statement of progress, without a formal examination. Any changes necessary are made within the first month.

### EXAMINATIONS.

Students will have frequent written examinations in each subject. Final Examinations will be required in each subject when completed or at the close of the Academic year. Pass mark, 50 per cent.; Second Class Standing, 60 per cent.; First Class, 75 per cent.; First Class with Honors, 90 per cent., and over.

### MERIT ROLL.

A record will be kept of conduct and daily recitations, and half-yearly reports will be sent to parents and guardians, showing standing in *each study*, and deportment both in day school and domestic life.

### THE HANSON SCHOLARSHIP.

The Rev. C. A. Hanson offers a scholarship of \$20, to the young lady taking the highest average in either the first or second year of the Collegiate Course Department to be taken into the account.

### THE WATERLOO DISTRICT PRIZE.

The Waterloo District gives a sum of money annually to be distributed in prizes.

Dr. Canfield places a sum of money at the disposal of the Faculty, to be given as a prize in any Department they may direct.

From this time the honor of Valedictorian will be given to that student in the graduating class having the highest marks; Salutatorian to the student having the next highest.

---

## GOVERNMENT.

The design of the Trustees and Faculty is to conduct the Institution upon the principles of an earnest, evangelical but unsectarian Christianity.

The government exercised will be as nearly as possible *parental*, characterized by kindness, firmness and impartiality.

Religious Instruction is given in Sabbath Bible Classes and in the daily devotional exercises of the Institution. Students will be required to attend regularly the church selected by their parents or guardians.

Correspondence with the home circle will be allowed without supervision. Beyond this, the parents of each student must furnish the Principal with a list, of those with whom correspondence is permitted. A Post-box is kept in the building. Mail matter addressed in care of the institution is promptly delivered on arrival.

Visiting and receiving visits will be subject to the following regulations :—All persons, except near relatives, wishing to visit young ladies, will be expected to present a letter from parents or guardians, or to be otherwise suitably introduced.

Visitors are received from 3 to 5 o'clock, p.m. on Saturday *but not in the evenings or on the Sabbaths*. Students will be allowed at proper times to visit such families as the parents or guardians may name to the Principal, but not to remain out over night or on the Sabbath, except with a near relative.

Friends who are inviting must call for the young ladies and return with them.

In guarding the young ladies entrusted to our care from associations that would interfere with their studies and lead to pernicious results, we are pleased to be able to say that we are meeting with the approval of parents who patronize the Institution, and of every well instructed young lady.

It is desired that students should be supplied, if possible, with all necessary things before leaving home. To provide however, for necessities that may occur, students will be permitted to do shopping once a month always accompanied by a teacher.

☞ Candies, cakes and eatables generally, sent from home usually cause the receiver one or two days' sickness, and are a most pernicious kindness. Will parents and friends ponder this matter?

Constant attention is given to the health of students. Daily outdoor exercise is required, except in inclement weather, when light calisthenics in the Gymnasium are substituted.

The rules regulating the deportment and privileges of students are *just and reasonable*, not arbitrary, but such as experience has proved to be wise and necessary. Observance of our rules and general conformity to the proprieties of good society are the conditions of admission, and of

continued connection with the College. Intractable students, and those whose influence is found to be demoralizing, will be dismissed.

The Principal and his family, as well as the Preceptress and other Teachers, live in constant and immediate connection with the Academic family.

Parents and guardians of young ladies may be assured that while the most strenuous efforts will be made to secure the development and strengthening of the mental powers, and to form correct general habits and a high principled Christian character, due attention will also be given to the preservation of health, and the cultivation of refined taste and lady-like manners. In short, no pains will be spared by lectures, and by private hints and suggestions, as occasion shall require, so to regulate the daily deportment of each pupil as to make easy and habitual all the graces and proprieties of refined and accomplished womanhood.

#### LEAVING THE COLLEGE.

It is requested that definite and particular arrangements be made by Parents and Guardians, and indicated to the Principal of the institution, respecting the leaving of the students at the close of the session, the time of their leaving, and the company with whom they shall leave.

All payments of money due the College, must be made before the student leaves.

Notice of a month should be given to the Principal before the removal of a student.

#### CORRESPONDENCE.

All correspondence respecting any of the departments of instruction, the admission of or withdrawal of students, their studies, etc., or application for Catalogues, or information touching the College, should be addressed directly to the Principal.

Confidential letters regarding the personal interests of a pupil should be addressed to Mrs. Dr. Henderson, who has the immediate supervision of all matters relating to the health and general comfort of the young ladies.

Messages by telephone to or from the students will be received or sent by the Principal.

## EXPENSES.

### BOARD AND TUITION.

Excellent Board, with Furnished Room and fuel, per week	... \$3.00
Washing, per week	... .25
Board, Furnished Room, Light and Fuel, per week of five days, ...	2.25
In case there are vacancies and a student desires to have a room to herself, there will be an extra charge of 25 cents per week.	
Tuition in Academic, 1st Grade, per term	... 4.50
“ “ 2nd “ “	... 5.50
“ “ 3rd “ “	... 6.50
“ Collegiate Course, per term	... 8.50
“ each subject of Collegiate Course when taken as an extra, per term	... 1.00
Tuition in same subjects, if taken without a Regular Course, each per term	... 3.00
Instrumental Music, per term	... 10.00
Use of Piano, one hour per day, per term	... 2.00
Voice Culture, per term	... 10.00
Single Lessons in Harmony, per term	... 10.00
Lessons in Class, per term	... 3.00
Vocal Music, in Class, per term	... 1.50
Drawing, per term	... 4.00
Water Colors, per term	... 6.00
Oil Painting, “	... 7.00
Commercial Course, per term	... 8.75
Commercial, including Academic Course, per term	... 10.00
“ “ “ Collegiate “ “	12.00
Certificate of Standing	... 0.50
Diploma, Commercial	... 2.00
“ M. E. L.	... 4.00
“ M. L. A.	... 4.00
Music	... 4.00

### TERMS OF PAYMENT, ETC.

An advance payment of \$35 is required for Board and Tuition Fees at the commencement of each term, or at time of entrance ; balance of account at end of term.

Students are admitted at any time, and charged *pro rata* from date of admission, except in the following cases :—

No deduction will be made for delay in entering upon the duties of the term, except in cases of students entering for the first time and after the first two weeks.

For absence of two weeks or less no deduction will be made, neither will any deduction be allowed those leaving the College during the last four weeks of the term.

It is highly important that pupils should be in attendance on the first day of the term, and that they should not leave until the close.

All Injuries to Furniture, Lamp, or other property, will be at the expense of the students concerned.

Boarders must provide their own Sheets, Pillow-Slips, Towels and Table Napkins and Toilet Soap, and every article must be plainly marked with the owner's name. Twelve articles are allowed weekly in the wash.

Removal of a student from College requires proper notice to the Principal, and the payment of all College Dues.

Text Books, Music, Art Material and Stationery furnished at trade prices.

---

#### VISITORS' REPORT FOR 1887-88.

Your Committee appointed at last Conference to visit the College at Stanstead, has taken occasion to do so during the year, and beg to submit the following report :—

We were kindly welcomed and shown through the building by its new Principal (Rev. Dr. Henderson) who comes to his work fully alive to his great responsibilities and determined if possible to make his work a success. A careful examination of the building from basement to garret, revealed accommodations ample and convenient for the purposes intended.

A commodious dining hall, airy, cheerful and convenient, has capacity for seating comfortably all the students the College can receive.

The reception room, drawing-room and class-rooms on the main floor, are models of neatness and convenience, and the large cheerful rooms for students betoken comfort for the lady boarders not often equalled. A large room in the upper story furnishes a valuable place for gymnastic exercises in wet and severe weather, and if properly finished and furnished by some friend of the College would be a source of endless pleasure

and profit to the students. So far as your visitors could judge by actual experience, the table supply was both abundant and appetizing. The health of the students we judged to be excellent if rosy faces and sprightly movements are allowed to count. Wise precaution is evidently taken not to shatter the constitution and blanch the face by burning the midnight oil.

The several teachers were at their posts of duty and seemed in every way well fitted for the work they were performing. The Musical Department seemed well sustained under the direction of Prof. Hall, who is an enthusiast in his profession.

The facilities for acquiring the French language are indeed first-class. The conversation hour, when the theory of the language is reduced to practice will be appreciated by those who know how hard it is to reduce the science of speech to actual use in daily life. The Art Room afforded your visitors an hour of rare enjoyment, where the several pupils in that Department were showing remarkable aptitude in the artistic line.

What the College seems to need now is more extensive patronage from the friends of higher education in the Province and elsewhere. It seems a pity that a College so well fitted both in mechanical appointments and educational advantages to educate hundreds, should be represented only by scores. "Beautiful for situation," and as healthy a locality as could well be found, we commend the institution to the patronage of parents who have children to educate.

JAMES KINES,  
G. H. HOWARD,  
C. R. FLANDERS,  
G. L. MASTEN



